

Mermade™

VIEW INSTRUCTIONS
& REGISTER
WARRANTY

CONSULTER LES INSTRUCTIONS ET
ENREGISTRER LA GARANTIE



AIRCURL MANUAL

hello@mermadehair.com

[@mermade.hair](https://www.mermadehair.com) [mermadehair.com](https://www.mermadehair.com) [#mermadehair](https://www.mermadehair.com)



**Thank you for purchasing a
Mermade. We hope you love it!**

We make tools & products that
change the **hair game**. We are a
team of hair enthusiasts inspiring a
new generation of **hairstylists**,
stylists and the **everyday human**.

Now, we're creating the next
game-changing hair tools &
products.

Merci d'avoir acheté un Mermade. Nous espérons que vous l'adorerez !
Nous créons des outils et des produits qui révolutionnent le monde de la coiffure. Nous
sommes une équipe de passionnés de cheveux inspirant une nouvelle génération de
coiffeurs, stylistes et de personnes du quotidien. Aujourd'hui, nous concevons les
prochains outils et produits capillaires révolutionnaires.

Mermade™

MERMADE HAIR PTY LTD 1/649 BEAUFORT ST. MT-LAWLEY, WA-6050

QUESTIONS OR COMMENTS:

E: HELLO@MERMADEHAIR.COM

W: WWW.MERMADEHAIR.COM

PH: (08) 6118 8408

MERMADE EURP BV, KROONWIEL 2. 6003BT WEERT, NETHERLANDS

Mermade™

ANTI-SCALD COOL TIP
PLAQUES ANTI-BRÛLURE

CERAMIC BARREL
CYLINDRE EN CÉRAMIQUE

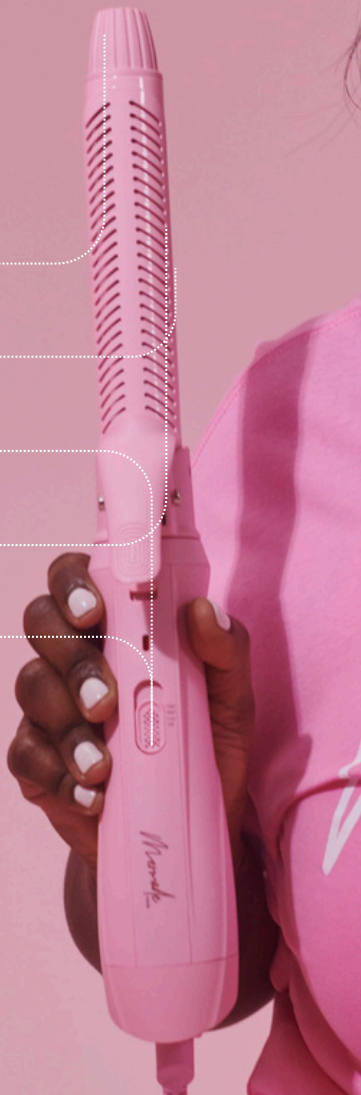
THREE HEAT SETTINGS
TROIS NIVEAUX DE CHALEUR

IONIC AIR FLOW TO DE-FRIZZ
FLUX D'AIR IONIQUE POUR DÉFRISER

POWER BUTTON
BOUTON D'ALIMENTATION

2-YEAR WARRANTY
2 ANS DE GARANTIE

WET OR DRY USE
CHEVEUX SECS OU HUMIDES



THIS MANUAL PROVIDES SAFETY INSTRUCTIONS, DIRECTIONS AND CARE INSTRUCTIONS.

PRODUCT: Aircurl™

MODEL NUMBER: MH4060 MH4061 MH4062 MH4063 MH4064 MH4065 MH4066 MH4067

VOLTAGE/WATTAGE: EU/AU/IN/UK: 220-240V, 1200W, 50-60Hz, US/CA: 125V, 1200W, 60Hz

TEMPERATURE/POWER SETTINGS

- Low: Low heat, high speed 140°F/60°C
- Medium: Medium heat, medium speed 203°F/95°C
- High: High heat, high speed 239°F/115°C

We have low heat & high speed so you can perform a cool blowdry with max intensity.

OPERATING INSTRUCTIONS

1. Plug the blow dry brush in. Ensure hair is 80% - completely dry.
2. Choose your heat & power setting.
3. Start by dividing hair into 2-inch sections. The larger the section, the larger the curl. Clamp the end of the hair and wind the hair up the barrel like a curling tong. Hold the barrel vertically or horizontally or wrap the hair around the barrel keeping your hands clear of the hot barrel.
4. Keep the hair wrapped around the barrel for 3-8 seconds. For wet hair repeat this process 1-3 times on each section until the hair is completely dry and has been shaped/curled.
5. Repeat this process for all layers and sections of hair.
6. Tip: Set each section with a roller for added volume & curl.
7. Once the hair has been curled, wait for it to cool down. Apply hairspray and then brush or comb through to your desired style.
8. Once you have finished drying your hair, slide the button down to 'OFF'. Allow the tool to cool down completely before stowing away. Remove hair & product build up weekly to ensure the appliance stays in good working order.

WARNING: Always do a test 1cm section at the back of your hair to ensure the proper setting for your hair type & to ensure the tool is working correctly & you understand how it functions. Place on a thermal/heat resistant surface.

AS WITH MOST ELECTRICAL MACHINES, ELECTRICAL PARTS ARE ELECTRICALLY LIVE EVEN WHEN THE SWITCH IS OFF. TO REDUCE THE RISK OF BURNS, FIRE, ELECTRIC SHOCK OR INJURY TO PERSONS:

1. Always unplug appliance immediately after using. An appliance should never be left unattended when it is plugged in.
2. Do not use while bathing or sleeping.
3. Do not place or store the machine where it can fall or be pulled into a tub or sink.
4. Do not place in or drop in water or any other liquid.
5. If the tool falls into water, unplug it immediately. Do not reach into the water.
6. Use this appliance only for its intended use as described in this manual. Do not use attachments not recommended by manufacturer.
7. Always place the appliance on a heat-resistant, stable flat surface.
8. Never operate this appliance if it has a damaged cord or plug, if it is not working properly, if it has been dropped or damaged, or if it has been dropped into water.
9. Keep cord away from the heated surfaces. Do not wrap the cord around the appliance.
10. Do not use an extension cord.
11. This appliance can be used by children aged from 8 years and above and persons with reduced physical, sensory or mental capabilities or lack of experience and knowledge if they have been given supervision or instruction concerning use of the appliance in a safe way and understand the hazards involved. Children shall not play with the appliance. Cleaning and user maintenance shall not be made by children without supervision.

ATTENTION

1. If the supply cord is damaged, it must be replaced by the manufacturer, its service agent or similarly qualified persons in order to avoid a hazard.
2. **WARNING:** Do not use this appliance near bathtubs, showers, basins or other vessels containing water.
3. Keep appliance out of reach from young children, particularly during use and cool down.

4. Never leave appliance unattended when it is connected to a power supply. Always place the appliance on a heat-resistant, stable flat surface.
5. Do not use on wet, damp or synthetic hair.
6. For additional protection, the installation of a residual current device (RCD) having a rated residual operating current not exceeding 30mA is advisable in the electrical circuit supplying the bathroom. Ask your installer for advice.
7. Always do a strand test before using on your hair as heat can affect some hair colour, in particular on freshly coloured, grey or toned hair.

MAINTENANCE

1. To clean the unit, be sure the unit is cool and unplugged. Wipe the handle and plates with a damp cloth. No other maintenance is necessary.
2. Do not attempt to repair the appliance yourself. This appliance has no user serviceable parts.
3. Unplug the unit whenever its not in use. Allow it to cool, then store it out of reach of children in a safe, dry location.
4. Never wrap the cord around the appliance, since this will cause the cord to wear prematurely and break, thus voiding warranty. Handle the cord carefully and avoid jerking, twisting, or straining it, especially at plug connections.

SAFETY & RECYCLING

1. Take extra care to ensure the hot plates do not contact skin or eyes.
2. Use a mirror when using the appliance to assist with safe use.
3. Do not place tool on surfaces that are not heat resistant.
4. Polythene bags over the product and packaging may be dangerous. To avoid danger of suffocation, keep away from babies and children. These bags are not toys.
5. This appliance may not be treated as household waste. It should be handed to an appropriate collection point for the recycling of Electrical and Electronic equipment. By ensuring this product is disposed of correctly, you will help prevent potential negative consequences for the environment and human health, which could otherwise be caused by inappropriate waste handling of this product. For more detailed information about the recycling of this product, please contact your local council office or your household waste disposal service. For EU/UK disposal WEEE (Waste from Electrical and Electronic Equipment) requires that used household appliances are not disposed of in the normal municipal waste stream. Used appliances must be collected separately in order to optimise the recovery and recycling of the materials from which they are made and to reduce the impact on human health and the environment.

LIMITED 2-YEAR GLOBAL WARRANTY

Mermade Hair warrants this product against any defects that are due to faulty material or workmanship for a two-year period from the original date of consumer purchase. This warranty does not include damage to the product resulting from accident or misuse.

If the product should become defective within the warranty period, Mermade Hair will replace item. Email hello@mermadehair.com for Warranty issues and provide the batch code found on the power cord. This warranty does not cover products damaged by the following:

- Accident, misuse, abuse or alteration of the product
- Servicing by unauthorized persons
- Use with unauthorized accessories
- Connecting it to incorrect current and voltage
- Wrapping cord around appliance causing premature wear & breakage
- Any other conditions beyond our control

MERMADE HAIR SHALL NOT BE RESPONSIBLE FOR ANY INCIDENTAL, SPECIAL OR CONSEQUENTIAL DAMAGES RESULTING FROM THE USE OF THIS PRODUCT. ALL IMPLIED WARRANTIES, INCLUDING BUT NOT LIMITED TO IMPLIED WARRANTIES OF FITNESS AND MERCHANTABILITY, ARE LIMITED IN DURATION TO TWO YEARS FROM DATE OF ORIGINAL PURCHASE. KEEP ORIGINAL SALES RECEIPT AS PROOF OF PURCHASE FOR WARRANTY PURPOSES OR REGISTER YOUR WARRANTY ONLINE.

This warranty gives you specific legal rights and you may also have other rights which vary from state to state or province to province. Some states do not allow that exclusion or limitation of incidental, special, or consequential damages.

SAVE THESE INSTRUCTIONS



Mermade™

MANUFACTURER:

MERMADE HAIR PTY LTD

1/649 BEAUFORT ST, MT LAWLEY, WA, 6050

MERMADE EURP BV

KROONWIEL 2, 6003BT WEERT, NETHERLANDS

QUESTIONS OR COMMENTS:

E: HELLO@MERMADEHAIR.COM

W: WWW.MERMADEHAIR.COM

PH: (08) 6118 8408