

MermaidTM



VIEW INSTRUCTIONS
& REGISTER
WARRANTY

CONSULTER LES INSTRUCTIONS ET
ENREGISTRER LA GARANTIE



AUTO CURL TONG MANUAL

hello@mermadehair.com

[@mermade.hair](https://twitter.com/mermade.hair) [mermadehair.com](https://www.mermadehair.com) [#mermadehair](https://www.instagram.com/mermadehair)



**Thank you for purchasing a
Mermade. We hope you love it!**

We make tools and products that
change the **hair game**. We are a
team of hair enthusiasts inspiring a
new generation of **hairstylists**,
stylists and the **everyday**
humans. Now, we are creating the
next **game-changing** hair tools
and products.

Merci d'avoir acheté un Mermade. Nous espérons que vous l'adorerez !
Nous créons des outils et des produits qui révolutionnent le monde de la coiffure. Nous
sommes une équipe de passionnés de cheveux inspirant une nouvelle génération de
coiffeurs, stylistes et de personnes du quotidien. Aujourd'hui, nous concevons les
prochains outils et produits capillaires révolutionnaires.

Mermade™

MERMADE HAIR PTY LTD 1/649 BEAUFORT ST, MT LAWLEY, WA, AUSTRALIA 6050

QUESTIONS OR COMMENTS:

E: HELLO@MERMADEHAIR.COM

W: WWW.MERMADEHAIR.COM

PH: (08) 6118 8408

MERMADE EURP BV, KROONWIEL 2, 6003BT WEERT, NETHERLANDS

IONIC GENERATOR

PLAQUES ANTI-BRÛLURE

ANTI-SCALD COOL TIP

PLAQUES ANTI-BRÛLURE

32MM/1.25" CERAMIC BARREL

CYLINDRE EN CÉRAMIQUE

60-MIN AUTO SHUT-OFF

EXTINCTION AUTO APRÈS 60 MIN

WORLDWIDE UNIVERSAL VOLTAGE

TENSION UNIVERSELLE

TEETH/CHAMBER

DENTS / CHAMBRE

SPIN (L) LEFT BUTTON

BOUTON DE ROTATION GAUCHE (L)

SPIN (R) RIGHT BUTTON

BOUTON DE ROTATION DROITE (R)

TEMPERATURE DISPLAY

CONTRÔLE DE LA TEMPÉRATURE

POWER & TEMPERATURE BUTTON

BOUTON D'ALIMENTATION/TEMPÉRATURE



LONG
GROOVE
OPENING
FOR HAIR

OUVERTURE LONGUE
RAINURÉE POUR LES
CHEVEUX

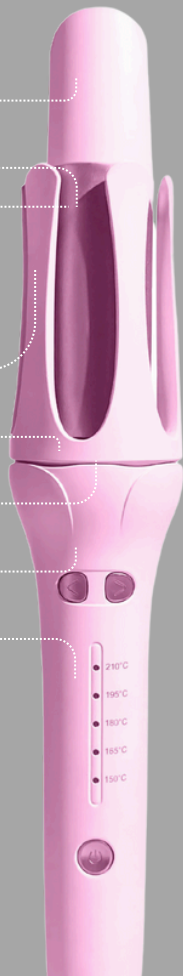
WATCH THE TUTORIAL

REGARDEZ LE TUTORIEL

SCAN ME



SCAN ME



TEST ALL BUTTONS BEFORE USE. NEVER SPIN CLOSE TO THE SCALP

TESTER TOUTS LES BOUTONS AVANT UTILISATION. NE JAMAIS UTILISER PROCHE DU SCALPE

THIS MANUAL PROVIDES SAFETY INSTRUCTIONS, DIRECTIONS AND CARE INSTRUCTIONS. PLEASE STORE SAFELY.

PRODUCT: Auto Curl Tong

MODEL NUMBER/S: MH3063

TEMPERATURE: 300°F (150°C), 330°F (165°C), 360°F (180°C), 390°F (195°C), 410°F (210°C)

VOLTAGE/WATTAGE: UNIVERSAL VOLTAGE, 100V - 240V, 50Hz - 60Hz, 38W

OPERATING INSTRUCTIONS

- **Power on:** Plug the device into a power outlet. Press the on/off button located at the bottom of the tool to switch it on. Use a short press on the power button to adjust the temperature up or down. Important: Test all buttons before use.
- **Set the Temperature:** Select the temperature based on your hair type. We recommend starting at the lowest setting and adjusting as needed.
- **Prepare Your Hair:** Apply a heat protection spray and ensure your hair is completely dry and tangle-free.
- **Position the Tool:** Hold the tong so that the side marked "This side towards head" faces your head. Take a small 1-inch section of hair and position the tool a few inches from the root (Fig.1). Insert the hair into the long groove, placing the top section of the section (not the ends) into the chamber.
- **Curling Directions :** Select your preferred curl direction - clockwise or anti-clockwise - based on the desired style. Long press the left or right rotation key until the hair is completely wrapped, release the rotation key and wait up to 7 seconds. Upon hearing the buzzer 3 times, gently let hair out of chamber. Short press the rotation key for a small spin. The protective comb teeth ensure the hot barrel stays a safe distance from your scalp. Note: You may release earlier for a looser curl.
- **Finishing Touches:** Allow curls to cool completely before styling further. You may leave them as-is or brush out for a softer and voluminous look. The tool will automatically shut off after 60 minutes of inactivity. Always turn off and unplug the device after use.

Fig.1



ANTI SCALDING/TANGLING

The tip of the automatic curling iron and the exterior of the barrel are insulated to protect your face and hands from burns during use. The automatic curling iron is equipped with an intelligent magnetic induction motor and anti-tangling design. When hair is placed too much or incorrectly, it will automatically pause and prevent hair from getting stuck, while the buzzer will sound for 3 seconds. At this point, you must stop and carefully remove your hair with your fingers, making sure your fingers do not touch the heated barrel.

IONIC TECHNOLOGY

The curling iron is equipped with a negative ion function. The ionic generator produces the ions to neutralize static electricity for smooth and glossy hair. When this appliance is turned off, the negative ion function is also turned off.

WARNING: The tool has a motorised function that, if impaired or used close to the scalp could cause serious pain or burns to the scalp. If the tool continues to rotate once you have removed your finger from the button, immediately slide hair out and turn off. Always do a test curl using the tool to ensure the proper setting for your hair type. Place on a thermal/heat resistant surface.

AS WITH MOST ELECTRICAL MACHINES, ELECTRICAL PARTS ARE ELECTRICALLY LIVE EVEN WHEN THE SWITCH IS OFF. TO REDUCE THE RISK OF BURNS, FIRE, ELECTRIC SHOCK OR INJURY TO PERSONS:

- Always unplug appliance immediately after using. An appliance should never be left unattended when it is plugged in.
- Do not use while bathing or sleeping.
- Do not place or store the machine where it can fall or be pulled into a tub or sink.
- Do not place in or drop in water or any other liquid.
- If the tool falls into water, unplug it immediately. Do not reach into the water.

- Use this appliance only for its intended use as described in this manual. Do not use attachments not recommended by manufacturer.
- Always place the appliance on a heat-resistant, stable flat surface.
- Never operate this appliance if it has a damaged cord or plug, if it is not working properly, if it has been dropped or damaged, or if it has been dropped into water.
- Keep cord away from the heated surfaces. Do not wrap the cord around the appliance.
- Do not use an extension cord.
- This appliance can be used by children aged from 8 years and above and persons with reduced physical, sensory or mental capabilities or lack of experience and knowledge if they have been given supervision or instruction concerning use of the appliance in a safe way and understand the hazards involved. Children shall not play with the appliance. Cleaning and user maintenance shall not be made by children without supervision.

ATTENTION



- If the supply cord is damaged, it must be replaced by the manufacturer, its service agent or similarly qualified persons in order to avoid a hazard.
- **WARNING:** Do not use this appliance near bathtubs, showers, basins or other vessels containing water.
- Keep appliance out of reach from young children, particularly during use and cool down.
- Never leave appliance unattended when it is connected to a power supply. Always place the appliance on a heat-resistant, stable flat surface.
- Do not use on wet, damp or synthetic hair.
- For additional protection, the installation of a residual current device (RCD) having a rated residual operating current not exceeding 30mA is advisable in the electrical circuit supplying the bathroom. Ask your installer for advice.
- Always do a strand test before using on your hair as heat can affect some hair colour, in particular on freshly coloured, grey or toned hair.

MAINTENANCE

- To clean the unit, be sure the unit is cool and unplugged. Wipe the handle and plates with a damp cloth. No other maintenance is necessary.
- Do not attempt to repair the appliance yourself. This appliance has no user serviceable parts.
- Unplug the unit whenever it is not in use. Allow it to cool, then store it out of reach of children in a safe, dry location.
- Never wrap the cord around the appliance, since this will cause the cord to wear prematurely and break, thus voiding warranty. Handle the cord carefully and avoid jerking, twisting, or straining it, especially at plug connections.

SAFETY & RECYCLING

- Take extra care to ensure the hot plates do not contact skin or eyes.
- Use a mirror when using the appliance to assist with safe usage.
- Do not place tool on surfaces that are not heat resistant.
- Polythene bags over the product and packaging may be dangerous. To avoid danger of suffocation, keep away from babies and children. These bags are not toys.
- This appliance may not be treated as household waste. It should be handed to an appropriate collection point for the recycling of Electrical and Electronic equipment. By ensuring this product is disposed of correctly, you will help prevent potential negative consequences for the environment and human health, which could otherwise be caused by inappropriate waste handling of this product. For more detailed information about the recycling of this product, please contact your local council office or your household waste disposal service. For EU/UK disposal WEEE (Waste from Electrical and Electronic Equipment) requires that used household appliances are not disposed of in the normal municipal waste stream. Used appliances must be collected separately in order to optimise the recovery and recycling of the materials from which they are made and to reduce the impact on human health and the environment.



LIMITED 2-YEAR GLOBAL WARRANTY

Mermade Hair warrants this product against any defects that are due to faulty material or workmanship for a two-year period from the original date of consumer purchase. This warranty does not include damage to the product resulting from accident or misuse.

If the product should become defective within the warranty period, Mermade Hair will replace item. Email helo@merrmadehair.com for Warranty issues and provide the batch code found on the power cord. This warranty does not cover products damaged by the following:

- Accident, misuse, abuse or alteration of the product
- Servicing by unauthorized persons
- Use with unauthorized accessories
- Connecting it to incorrect current and voltage
- Wrapping cord around appliance causing premature wear & breakage
- Any other conditions beyond our control

MERMADE HAIR SHALL NOT BE RESPONSIBLE FOR ANY INCIDENTAL, SPECIAL OR CONSEQUENTIAL DAMAGES RESULTING FROM THE USE OF THIS PRODUCT. ALL IMPLIED WARRANTIES, INCLUDING BUT NOT LIMITED TO IMPLIED WARRANTIES OF FITNESS AND MERCHANTABILITY, ARE LIMITED IN DURATION TO TWO YEARS FROM DATE OF ORIGINAL PURCHASE. KEEP ORIGINAL SALES RECEIPT AS PROOF OF PURCHASE FOR WARRANTY PURPOSES OR REGISTER YOUR WARRANTY ONLINE.

This warranty gives you specific legal rights and you may also have other rights which vary from state to state or province to province. Some states do not allow that exclusion or limitation of incidental, special, or consequential damages.

SAVE THESE INSTRUCTIONS



Mermade™

MANUFACTURER:
MERMADE HAIR PTY LTD

1/649 BEAUFORT ST. MT LAWLEY, WA, AUSTRALIA 6050

MERMADE EURP BV
KROONWIEL 2. 6003BT WEERT, NETHERLANDS

QUESTIONS OR COMMENTS:

E: HELLO@MERMADEHAIR.COM

W: WWW.MERMADEHAIR.COM

PH: (08) 6118 8408